

## What we can do for you



### Energy Account Management – that's tailored to you

Any two or more, of our services in this leaflet can be put together into a bespoke package that gives you all you need and nothing you don't. For an agreed fixed monthly fee, we will take care of all your energy contract negotiations, any reporting and rebilling, manage your incentives and compliance needs and more. We can also provide you with a monthly summary of performance and forecasting of consumption and cost for your energy assets, to help you manage your business effectively. Your dedicated Account Manager will always be on hand to provide advice and support.



### Energy Supply - Import & Export Contracts

We have an expert team of people dedicated to getting the best possible electricity and gas supply contracts for clients. For larger supplies, we can go to tender on your behalf, ensuring you get access to a wide range of supplier's prices and a range of contract lengths. We can also arrange MoP and DC contracts for those with Half Hourly (HH) accounts. For those wishing to trade electricity from generation then we can arrange export contracts as well as monitor markets and operate engines on client's behalf to maximise income.



### Grid Connection

We will start this process and manage that aspect of the development on your behalf. Within this work, we would also undertake a study to calculate your site demands and determine what level of import/export capacity it would be best to have and will consider onsite electrical generation.

## RHI related products



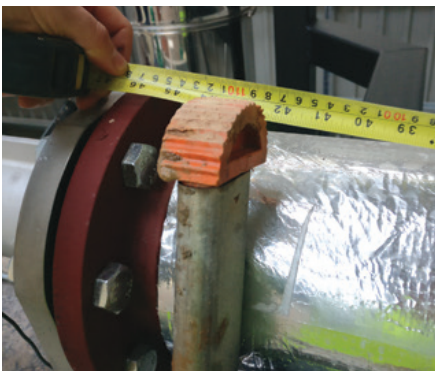
### Renewable Heat Incentive (RHI) applications

We have handled many RHI applications across the spectrum of technologies, from Biomass Boilers, Heat Pumps, AD CHP, to biomethane gas-to-grid injection sites. Therefore, we are knowledgeable about the process and are well placed to ensure the application goes smoothly. A full RHI application should be expected to take eight to twelve months to be accepted by Ofgem, expect this to take longer given the reduced capacity due to the current outbreak. This process may be sped up if a tariff guarantee is already in place.



### Amendment applications

Any changes you make to your RHI accredited system or the application must be reported to Ofgem. This needs to be done within 28 days of the change. Whilst an amendment is in progress RHI payments for that installation are put on hold by Ofgem, once reapproved any backlog of payments can be reclaimed. We have helped many customers to navigate this process. We will work with you to ensure your proposed changes do not adversely impact your RHI accreditation. We will then prepare and submit your application to Ofgem and respond to any questions that arise, to ensure as smooth and timely a process as possible.



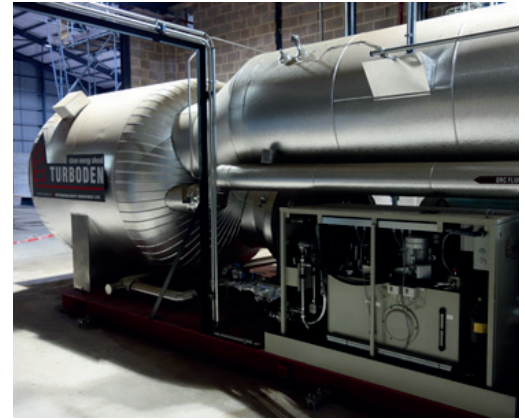
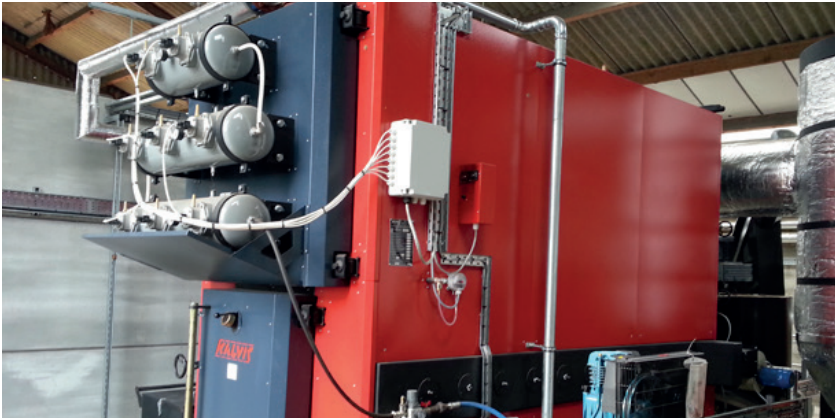
### HealthChecks

Getting accredited to one of the incentive schemes such as RHI, FIT or ROC, is just the start. Once on these schemes, you will have many years of compliance ahead of you in order to ensure you keep receiving your payments. Typically, over the life of the RHI scheme, you can expect to be audited at least twice. If an auditor identifies compliance issues this could lead to delays in payments, whilst serious breaches could see you removed from the scheme and any money received being reclaimed. We can help reduce this risk by carrying out one of our HealthCheck audits. One of our experienced engineers will perform a HealthCheck of your compliant installation(s) and associated record keeping and paperwork. We will highlight any areas of concern and provide an action plan for improvement.



### Periodic Data Submission

Part of the ongoing obligations of the RHI scheme is Periodic Data Submission (PDS) and proof of sustainability. Depending on the size of your installation, this must be done on a monthly or quarterly basis and there are several bits of data required to complete it. This can be a complex process. We have systems in place to gather the required data from you and make accurate & timely submissions thereby reducing the chance of payments being withheld due to late or incorrect submissions. Proof of sustainability is part of PDS and must be completed for each feedstock used. We have expertise in calculating this proof of sustainability and providing support with the annual sustainability audits which occur for these sites. This service includes regular reporting to you detailing your generation and calculating the income that can be expected to be earned from this generation. This is an ideal way of tracking your income from the plant. We also offer this data submission service for the FIT and ROC schemes.



## Environmental permitting

### Medium Combustion Plant Directive (MCPD) & Environmental Permitting

If a site has combustion equipment that is rated greater than 1 MW and less than 50 MW thermal input, then an MCPD permit is required. The actual date when this environmental permit is required is dependent on plant type, size and age. However, any new plant installed after 20 December 2018 will need an MCPD Permit immediately. We have a great deal of experience in managing what can be a complex and time consuming process. MCPD's can take around four months to get, so this needs to be accounted for in the project timeline. Depending on what other activities are taking place on site (combustion for example) other environmental permits may be required. In certain circumstances, the operation of an AD plant is a permissible activity itself. We can access the site, and the plant proposed to operate on the site and determine what permitting requirements you have.

## Combined Heat and Power Quality Assurance (CHPQA)

It can be an advantage to be registered on the CHPQA programme. Successful CHPQA certification grants eligibility to a range of benefits, including Renewable Obligation Certificates, Renewable Heat Incentive, Carbon Price Floor (heat) relief, Climate Change Levy exemption (in respect of electricity directly supplied), Enhanced Capital Allowances and preferential Business Rates. We will determine which of the above is of potential benefit to you and determine if there is sufficient benefit to warrant the cost of registration. Once registered, we will take care of your annual submissions to ensure you remain compliant.



## Green Gas Support Scheme (GGSS)

With the RHI support scheme coming to a close to new applicants in March 2021 the GGSS is being brought in to continue support for biomethane injection. This is expected to be open for applications in Autumn 2021 and we can assist participants in applying for the scheme.

## Energy Saving opportunity Scheme and Streamlined Energy Carbon Reporting

Energy Saving Opportunity Scheme (ESOS) and Streamlined Energy Carbon Reporting (SECR) are compulsory for big energy users that meet the qualifying criteria. Eligible businesses are required to assess their energy use and set out an energy saving strategy. We offer a full audit service designed to ensure compliance with either and to help identify how to increase energy efficiency and save cost.



## Green Gas Certification Scheme

We can register the biomethane produced on site on the Green Gas Certification Scheme which enables you to trade gas certificates. As specific gas is registered on the scheme, this is a way of ensuring that biogas is not re-sold and that the environmental benefits of using biogas are genuine. Many consumers who value this guarantee and the additional confidence it provides.



## Carbon Footprinting

As the climate change agenda gathers pace, we can assist customers who are thinking about how to assess their greenhouse gas emissions and how to begin to reduce or offset them. This process usually starts by calculating a carbon footprint. – a measure of the total greenhouse gas (GHG) emissions caused directly and indirectly by a site or a business. This carbon footprint can then act as a benchmark by which to monitor and measure the effect of various changes and improvements in subsequent years. We will help you to identify the most appropriate carbon footprint calculator tool(s). We will assist you in completing the calculator tool and in interpreting the results and we can provide you with comparisons to benchmark yourself against similar businesses. We can also carry out a fully bespoke carbon footprint of your business should you wish to dive deeper into your carbon footprint and identify opportunities for efficiency improvements. Or if you already have done your carbon footprint calculations, we can provide an independent verification service carried out to ISO14064 standards.



## Feasibility study

A good starting point to any project is a Feasibility Study. We can test the feasibility of your project, to help you avoid costly mistakes and work out if it is a worthwhile investment. We can review any existing proposals to check they stand up to scrutiny, we can assess when and how you use energy within your business, model your energy usage and forecast your future energy usage, we can advise on how the various technologies and solutions might fit your specific business requirements and the likely size & scale of the installation required. We can consider the various incentive schemes for viability and we can produce a detailed written report outlining returns, typical costs and payback periods.



## Energy Efficiency audits

An in-depth assessment of where, when and how you use energy and potentially waste it, within your business. From the efficiency of equipment and processes like heating, cooling and lighting, to how well buildings, stores and specialist structures are built, maintained and used. One of our experienced engineers will carry out an energy efficiency audit and provide you with a detailed written report, with recommendations for improvement – including estimates of costs and payback.



## Renewable Transport Fuel Obligation (RTFO)

RTFO's are something worth looking into for biomethane producers, RTFO's are a support scheme that allows biomethane producers to receive Renewable Transport Fuel Certificates (RTFC's) which are worth around 15-20p/RTFC. We can undertake registration work and applications onto the RTFO scheme to get sites profitably trading RTFC's.

Phone: **024 6779 6512**  
Email: **info@nfuenergy.co.uk**

**www.nfuenergy.co.uk**

Facebook  @nfuenergy | Twitter  @nfu\_energy | LinkedIn  NFU Energy